


There is a known issue affecting some vehicles whereby a Chrysler-issued TIPM firmware change reversed the operation of Front Turn Signals and Fog Lamps. It is easily remedied in a few minutes by swapping 2 (or 4) wires where they enter the backside of one of the TIPM wire harness connector plugs. This is known as the C4 connector. For more information, visit our website at www.tipmrebuilders.com

 Please keep in mind that your specific vehicle might not be shown below but can still be affected.

AFFECTED VEHICLES



2011-2013
Chrysler Town & Country



2011-2013
Dodge Grand Caravan



2011-2013
Volkswagen Touareg



2011-2013
Volkswagen Routan



2011-2013
Dodge Durango



2011-2013
Jeep Grand Cherokee

SYMPTOMS

If, after installing your newly purchased TIPM, your front turn signals and fog lamps (if equipped in your vehicle) function normally (most cases), you do not need to do anything further.

WITH FOG LAMPS



Fog lamps flash while operating signals.



Signal lamps steady while operating fog lamps.

W/O FOG LAMPS



Signal lamps don't respond or will be in rapid flash mode while operating them.



C4 Pinswap video

Scan the code to be directed to our Pinswap video or visit www.tipmrebuilders.com/installation

Scan me



READY TO SWAP

You are now ready to swap pins. Follow the checklist on the other side of this page.

WIRE SWAP CHECKLIST



Tools
you'll Need



Flat Screwdriver



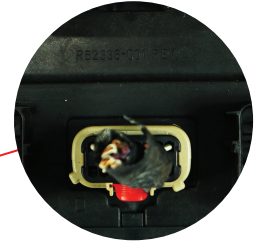
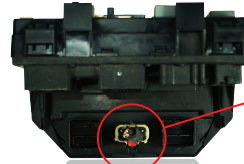
Paperclip

1. Disconnect Battery & Uninstall TIPM

Refer back to your installation sheet for correct battery Disconnection & uninstalling your tipm.

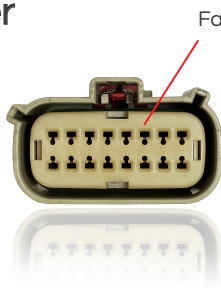
2. Locate the C4 Plug

Back of TIPM

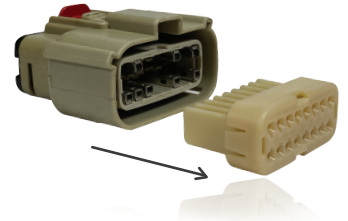


3. Use Flathead screwdriver

to gently pry the front face plate out from the C4 connector.

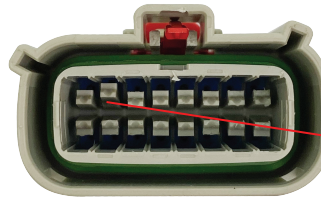


Face Plate



4. Use paperclip

to release the terminals by pushing the plastic grippers away from them while pulling on the wire from the back.

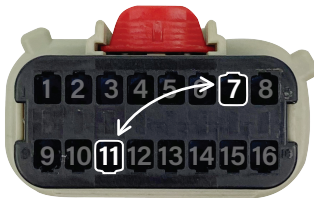


Use paper clip to push away from terminal.

If Left side Fog + Turn Signals are affected

Swap pins 7 & 11

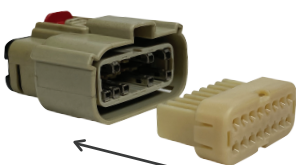
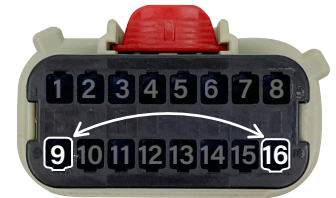
If either 7 or 11 is absent, move the wire that is present anyway.



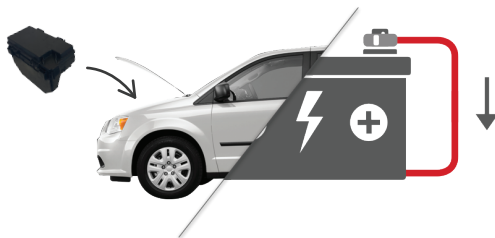
If Right side Fog + Turn Signals are affected

Swap pins 9 & 16

If either 9 or 16 is absent, move the wire that is present anyway.



1. Reattach front faceplate and connect plug back into the TIPM.



2. Reinstall Tipm and Connect Battery. Refer to installation sheet.



3. Perform a soft reset. Refer to installation sheet.



4. Verify that your turn signals are functioning properly.

WRAP UP